



Leabhairín Eolais



Scoil Chrónáin

www.scoilchronain.ie
[Meitheamh 2022 / June 2022](#)

Gaeilge / Irish

Is Gaelscoil í Scoil Chrónáin agus is í an Ghaeilge teanga labhartha agus chumarsáide na scoile. Is trí mheán na Gaeilge a múintear ábhair an churaclaim. Labhraíonn na páistí, na múinteoirí agus foireann na scoile Gaeilge. Úsáidtear modh an tumoideachais sa Ghaelscoil, is é sin, cuirtear an Ghaeilge os comhair na bpáistí ar bhonn leanúnach i ngnáthshuímh phraiticiúla fheidhmiúla ionas go bhfaigheann siad tuiscint agus líofacht sa Ghaeilge sa bhealach céanna is a d'fhoghlaim siad a gcéad teanga sa bhaile. Bíonn na páistí tumtha sa teanga ón gcéad lá ar scoil dóibh. Bíonn an chaint bunaithe ar na rudaí a bhíonn ar siúl ag an bpáiste, ar na bréagáin, ar threalamh, orthu féin etc. Bíonn focail an mhúinteora sothuigte ón gcómhthéacs.

Forbraítear cumas cainte na bpáistí trí scéalta, amhráin agus rainn a mhúineadh. Úsáidtear áiseanna teagaisc spreagúla, póstaer ildaithe, pictiúir mhealltacha, puipéid, cluichí éagsúla, dlúthdhioscaí idirghníomhacha agus teicneolaíocht an eolais chun na páistí a spreagadh chun dul i mbun cumarsáide sa Ghaeilge. Leantar an Scéim 'Séideán Sí' sa scoil agus éiríonn leis na páistí ardchaighdeán a bhaint amach sa Ghaeilge de réir a chéile. Is é ár sprioc go labhróidís Gaeilge eatarthu féin istigh sa scoil agus i gclós na scoile, go mbeadh meas acu ar an nGaeilge agus go mbeidís an-bhródúil as a gcaighdeán Gaeilge.

Ní mór do na daltaí an Ghaeilge atá acu a labhairt i gcónaí – sa rang, sa chlós agus ag imeachtaí scoile. Tá ainm Gaeilge do pháiste ar an aip Connect, tuairiscí scoile & rl. agus is ceart é seo a úsáid le cumarsáid na scoile.

Iarraimid ar thuismitheoirí gach aon tacaíocht a thabhairt chun úsáid na Gaeilge a fhorbairt agus a chur chun cinn.

“Beatha teanga í a labhairt!”

Scoil Chrónáin is an All-Irish school (Gaelscoil) and Irish is the language of communication and the language of instruction in Scoil Chrónáin. Total immersion in Irish is used in Naíonáin Bheaga. From the beginning the Múinteoir speaks exclusively in Irish to the children. The vocabulary at first

deals with the children themselves and the immediate school environment. The meaning becomes obvious from the context. The children soon pick up the words / phrases / sentences used throughout the day, in much the same way as they acquired their first language. The child's language is further extended through the teaching of songs, rhymes, poems, and stories. Posters, pictures, puppets, games, and IT are used as teaching aids. We follow the Irish scheme 'Seideán Sí' throughout the school, and the children gradually achieve a good standard of Irish as they advance from class to class. It is our aim that the children will use Irish at all times in school and in the yard and that they develop a love and a respect for the language and take pride in the standard of Irish that they achieve while attending Scoil Chrónáin.

As children become more fluent, they are expected to speak Irish at all times in class, in the yard and at all school activities. Your child's Irish name is on the Connect app, school reports etc and this is the version you should use when contacting the school.

We therefore ask all parents to promote and support the use of Irish in every way possible. One learns a language best by speaking it.

Clár an Abhair (Table of Contents)

Cuid a hAon Ginearálta (Section 1 General)	5
Cumarsáid / Communication:	5
An Lá Scoile / School Day:	5
Tinreamh & Poncúlacht / Attendance & Punctuality:	7
Ag Teacht Isteach Déanach / Arriving Late:	7
Ag Imeacht Luath / Leaving Early:.....	8
Maidin Fhliuch / Wet Mornings:.....	10
Daltaí atá ag taisteal ar Bhus Scoile / Pupils travelling on School Bus:.....	10
Lón Sláintiúil / Healthy Lunch:.....	10
Cnónna / Nuts:.....	11
Tinneas / Timpistí / Leigheas / Illness / Accidents / Medicine:	11
Bualadh Cloiginn / Headbump:	12
Duine Fásta Freagrach / Emergency Contact:.....	13
Asláithreachtaí / Absences:	14
Cuid 2 Acadúil (Section 2 Academics)	15
Obair Bhaile / Homework:	15
Cé mhéid ama? How much time?	17
Scrúduithe Caighdeánacha / Standardised Tests:.....	17
Míniú ar sTen / Understanding STen scores:.....	17
Tuairiscí Scoile / End of Year School Reports:	18
Cianfhoghlaim / Remote Learning:	19
Cuid 3 Naíonáin Bheaga ag Tosú ar Scoil (Section 3 Junior Infants Starting School)	20
Conas cabhrú le do pháiste a bheith ullamh don scoil / <i>How to help your child prepare for school:</i>	20
Go Ginearálta / <i>In General:</i>	20
Go hAcadúil / <i>Academic:</i>	21
Eile / <i>Other:</i>	21
An Chéad Lá Ar Scoil /The First Day at School:.....	22
Ag dul Abhaile / Going Home:.....	Error! Bookmark not defined.
Obair Bhaile / Homework:	24
Litreacha / <i>Letters:</i>	24
Scribhneoireacht /Writing:.....	24
Is féidir leat cabhrú ... <i>You can help</i>	26

Foghraíocht / <i>Phonics</i> :.....	26
Mata/ Maths:.....	28
Cuid 4 Tíos (Section 4 Housekeeping)	29
Le Chéile.....	29
Rialacha na Scoile /School Rules:.....	30
Cód Iompair / Code of Behaviour:	32
Éide Scoile / School Uniform:	32
Culaith Spóirt na Scoile / School Tracksuit:	32
An Bhliain Scoile / The Academic Year:	33
Coinne le Múinteoir / Appointment le Múinteoir:.....	34
Bréagáin & Milseáin / Toys & Treats:	34
Cuireadh Breithlae / Birthday Invitations:	34
Madraí (Dogs):.....	35
Proiséas Chun Gearán a Dhéanamh / Complaints Procedure:	35
Fón Póca & Gleas Leictreonach / Mobile Phones & Other Electronic Devices:.....	35
Maor Tráichta / Traffic Warden:.....	35
Cuntais Iníochta / Accounts Payable:	35
Árachas / Insurance:	36
Ról na dTuismitheoirí/ Caomhnóirí / Parents' / Guardians' Role:.....	37
Athruithe sa Bhaile / Changes at Home:	37
Teicneolaíocht an Eolais agus na Cumarsáide (TEC) / Information and Communication Technology (ICT):	38
Fearann Scoil Chrónáin / School Grounds:	39
POD (Primary Online Database):	39

Cuid a hAon Ginearálta (*Section 1 General*)

Cumarsáid / Communication:



Úsáideann Scoil Chrónáin ‘Aladdin’ mar chóras oifigiúil na scoile ó thaobh riaracháin de maidir le daltaí agus teaghlaigh. Is bog earra iontach é agus tá mórán feidhmeanna difriúla ar fáil, an aip ‘Connect’ san áireamh agus ‘epayments’.



Our school uses the ‘Aladdin’ software service for official administrative purposes for pupils and their families. It is an excellent piece of software and has many aspects to it including the ‘Connect’ app and ‘epayments’.

[Aladdin Schools - FAQs](#)

[Litir faoi Aladdin \(letter about Aladdin\)](#)

An Lá Scoile / School Day:

Osclaíonn Scoil Chrónáin go hoifigiúil chun daltaí a ghlacadh ar a 09:00. Moltar do na daltaí a bheith ar scoil chomh gar do 09:00 agus is féidir. **Ní ghlacfaidh an Bord Bainistíochta aon fhreagracht as daltaí a thagann ar scoil roimh 09:00.** Nuair a bhuaileann an clog seasann na daltaí ina líne. Tugann an múinteoir ranga na daltaí isteach sa seomra ranga.

Sos Beag do Naíonáin Bheaga - Rang 2	10:30 - 10:40
Sos Beag do Rang 3 - Rang 6	10:45 - 10:55

Sos Mór do Naíonáin Bheaga - Rang 2	12:00 - 12:20
Sos Mór do Rang 3 - Rang 6	12:25 - 12:45

Gach lá críochnóidh ranganna do Naíonáin ag 13:40 agus do gach rang eile ag 14:40. **Arís ní ghlacfaidh an Bord Bainistíochta aon fhreagracht as daltaí a bheith fágtha sa scoil nó i dtimpeallacht na scoile tar éis 14:40.** Moltar do thuismitheoirí gur mian leo go mbeadh a bpáistí tionlactha abhaile ón scoil a gcuid socraithe féin a dhéanamh. Ba chóir don duine atá á dtionlacan a bheith ag an scoil roimh 13:40 do Naíonáin agus roimh 14:40 do ranganna eile.

Nuair a bhíonn leathlá againn sa scoil téann na daltaí sna Naíonáin abhaile ag a 12:00 agus téann na daltaí ó Rang 1-6 abhaile ar a 12:10.

*The official opening time of Scoil Chrónáin is 09:00 and pupils should arrive between 08.50 and 09:00. Gates do not open until 08.50. **The Board of Management will not accept responsibility for children who arrive in school before 08:50.** The children walk to their line and when the bell rings the Múinteoir will escort the class to the classroom.*

Sos Beag do Naíonáin Bheaga - Rang 2	10:30 - 10:40
Sos Beag do Rang 3 - Rang 6	10:45 - 10:55

Sos Mór do Naíonáin Bheaga - Rang 2	12:00 - 12:20
Sos Mór do Rang 3 - Rang 6	12:25 - 12:45

Infant classes finish at 13:40 each day and Rang 1-6 end at 14:40.

The Board of Management will not accept responsibility for pupils who remain on or near the school premises after school hours.

Parents who wish to have their children escorted home from school at 13.40 or at 14:40 should make their own arrangements to have them met at the school. The person who is to escort them should be at the school, no later than 13:40 to collect pupils from Infant Classes and no later than 14:40 to collect all other pupils.

On days when the school closes for a half day the Infants go home at 12:00 and Rang 1-6 go home at 12:10.

Tinreamh & Poncúlacht / Attendance & Punctuality:

Ba chóir do gach páiste freastal ar scoil gach lá.

Tá sé tábhachtach go mbeifeá in am ar maidin. Cuireann sé isteach ar fhorbairt shóisialta agus ar fhorbairt acadúil do pháiste má bhíonn sé / sí déanach go rialta.

Pupils should attend school every day unless exceptional circumstances prevail.

Punctuality is very important as regular tardiness can impact on your child's academic and social progress.

Ag Teacht Isteach Déanach / Arriving Late:

Má bhíonn do pháiste déanach ní mór daoibh teacht chuig an príomhdhoras agus an 'intercom' a bhualadh. Tabharfaidh ball den fhoireann an páiste go dtí a s(h)eomra ranga sa tslí chuí. m.sh. beidh ar pháistí i Rang 1A & B dul síos an cosán ar thaobh na scoile de bharr nach dtagann siadsan trí phríomhfhoirgneamh na scoile níos mó.

Nuair atá páistí sa chlós, cuir glaoch ar an Oifig @ 01-4588889. Ná tar trasna go dtí an doras fiú amháin má bhíonn ball den fhoireann le feiceáil. Beidh siad i mbun a cuid oibre féin agus iarrtar ort gan bheith ag cur isteach orthu.

Níl gá nó cead agat teacht isteach sa scoil agus iarrtar ort do mhasc a chaitheamh i dtimpeallacht na scoile.

Má tá páiste déanach beidh sé cláraithe ar Aladdin.

Má thagann do pháiste isteach tar éis a 10:00, nó má tá siad in easnamh nuair a glaotar an rolla, tá siad "as láthair" ach marcáilte 'déanach'. Beidh oraibh an fáth a líonadh isteach ar Aladdin, m.sh. 'other'. Is féidir leat é seo a sheiceáil aon am ar an aip Connect.

If your child is late, please come to the main door and press the 'intercom'. A staff member will bring the pupil to his classroom in the correct way, ie if they are in Rang 1 they will go down the left hand side passageway.

If there are children in the yard when you arrive at the school gate, please don't enter the yard. Wait at the gates and ring the Oifig on 01-4588889. Even if you

can see a staff member in the yard, please don't disturb them as they are supervising or teaching and shouldn't be interrupted while doing their duties.

This process means that there is no reason normally or need for you to enter the school grounds.

Late arrival is registered on Aladdin.

If your child arrives after 10:00 (or is absent when the roll is called) he/she is 'absent' but marked 'late arriving'. Therefore you have to select the reason on the Aladdin Connect app as outlined above.

Ag Imeacht Luath / Leaving Early:

Iarrtar oraibh gan páistí a bhailiú i rith am scoile. Más féidir libh coinní & rí a dhéanamh taobh amuigh d'am scoile bheadh sé thar a bheith cabhrach dúinne.

Más gá duit do pháiste a thógaint, más féidir iad a thógaint ag tús ama an tsosa, ní bheifeá ag cur isteach ar an rang nó ar an múinteoir.

	Naíonáin	Rang 1-6
Sos Beag	10:30	10:45
Sos Mór	12:00	12:25

Bheadh sé níos fear do dhea-riaradh na scoile gan páistí a bhailiú níos déanaí ná 13:00 (Naíonáin) agus 14:00 (Rang 1-6), mar cuireann sé isteach go mór ar an rang.

Nuair a imíonn páiste abhaile luath, bíonn sé cláraithe ar Aladdin agus is féidir leat iad a fheiceáil ar an aip 'Connect'.

Má tá sé ríachtanach do pháiste a thógáil abhaile luath, caithfidh tú an scoil a chur ar an eolas an lá roimh ré, más féidir. An tslí is fearr chun é seo a dhéanamh ná ríomhphost a sheoladh chuig oifig@scoilchronain.ie le ainm do pháiste (as Gaeilge), a rang nó ainm an Mhúinteora ranga agus an t-am a mbeadh sé/sí le bheith bailithe. Tá na sonraí seo ar fad ar fáil ar an aip Connect. (Ná bain úsáid as Classdojo, le do thoil, mar ní féidir an teachtaireacht a chur ar aghaidh.)

Má tá do pháiste i Naíonáin - Rang 2 tar chuig príomhdhoras na scoile, buail an intercom agus gheobhfar do pháiste duit.

Má tá do pháiste i Rang 3-6, téigh go dtí na geataí glasa atá marcáilte “An Pháirc”, atá in aice an tséipéil agus glaoigh ar 01-4588889. Cuirfidh an Oifig an múinteoir ar an eolas go bhfuil tú ansin.

Níl cead agat teacht isteach sa scoil agus iarrtar ort do mhasc a chaitheamh i dtimpeallacht na scoile.

Pé áit atá i gceist, iarrtar ort gan bheith ag cur isteach ar pháistí trí bheith ag caint leo, ag croitheadh lámha leo & rl, fiú amháin má bhíonn baill foirne timpeall.

Iarrtar oraibh gan cur isteach ar na páistí nuair atá siad ar scoil agus gan stopadh ag geataí agus fallaí le bhur dtoil. Ní bhíonn aon scaradh sóisialta ar siúl.

We ask that you make medical and other appointments after school where possible, as leaving early can interrupt the class day.

However, should you need to collect your child early, we ask that they are collected at the start of the two break times. This way we reduce the interruption to the class and Múinteoir.

	Naíonáin	Rang 1-6
Sos Beag	10:30	10:45
Sos Mór	12:00	12:25

It would also be helpful not to collect the Naíonáin later than 13:00 and Rang 1-6 later than 14:00, as it would help reduce class interruptions.

Early collection will be entered on Aladdin by the Oifig or Múinteoir Ranga and you can see this on the Connect app.

Should it be necessary to collect your child early, we ask that you email the school the day beforehand, if possible. Send it to oifig@scoilchronain.ie and give your child's name (as Gaeilge) their class or Múinteoir's name (all available on the Connect app), and the time you are collecting them. (Please don't use Classdojo for this as the information can't be forwarded.)

If your child is in Naíonáin - Rang 2, and there are no children in the yard, please come to the main door, ring the intercom and we will bring your child to you. If there are children in the yard, please ring the Oifig from the front gate and ask for your child and we will bring your child to you. If your child is in R3-

6 - please go to the green gates of “An Pháirc” beside the church and ring 01-4588889. The Oifig will arrange to have your child sent out to you.

Again, with this process in place there is no reason to be in the school or on the grounds.

Whichever location you are collecting from please don't ask members of staff in the yard to help, as they are supervising or teaching, please don't talk or distract the children, wave into classrooms etc as this is very unsettling and disruptive for the class.

While it is tempting to do so, we ask that once the children are in school that you do not stop to talk to them through gates or hedges, as it is very distracting for the children.

Maidin Fhliuch / Wet Mornings:

Bheimis buíoch do na daoine a thagann ar scoil i gcarr maidin atá fliuch, dá bhféadfaidís fanacht sa charr, más féidir leo in aon chor é, go dtí go mbuaileann an clog. Sa tslí sin d'fhéadfadh na daoine a shiúlann ar scoil / a thagann ar bhus an foscadh a úsáid.

On wet mornings, it would be appreciated, if those who come to school by car remained in the car, if at all possible, until the bell rings, and thus allow those who walk / those who come by bus to avail of the shelter.

Daltaí atá ag taisteal ar Bhus Scoile / Pupils travelling on School Bus:

Ní féidir leis an mBord Bainistíochta freagracht a ghlacadh as daltaí a thionlacan ón mbus go dtí an scoil nó ón scoil go dtí an bus.

The Board of Management cannot accept responsibility for escorting the pupils from the bus to the school or from the school to the bus.

Lón Sláintiúil / Healthy Lunch:

Mar is eol daoibh tá inní ar an-chuid daoine faoi shábháilteacht agus faoi luach cothaithe an bhia atá á ithe ag an aos óg. Mar chuid d'Oideachas Sóisialta Pearsanta agus Sláinte (OSPS) ba mhaith linn béim a chur ar thábhacht dea-chothaithe maidir le fás, forbairt, agus sláinte. Táimid ag iarraidh ar thuismitheoirí tacaíocht a thabhairt agus lón sláintiúil a thabhairt dá bpáistí.

- Ní ceart go mbeadh deoch coipeach, criospaí, seacláid, brioscaí ná milseáin, acu ar scoil.
- Tá cosc iomlán ar ghuma coganta istigh sa scoil nó thart timpeall na scoile.

As you are aware there is now great emphasis on the importance of developing an understanding of healthy eating among children. The Social, Personal and Health Education (SPHE) aspect of the Curriculum explores the importance of food for growth, keeping healthy and providing energy. We are asking parents/guardians to support us by providing a healthy lunch for your child/children.

- Children should not bring fizzy drinks, crisps, chocolate, biscuits or sweets to school.*
- **Chewing gum is forbidden in the school or on the school grounds.***

Polasaí anseo (*Link to Policy*) [Polasaithe | Scoil Chrónáin \(scoilchronain.ie\)](https://www.scoilchronain.ie)

Cnónna / Nuts:

Tá roinnt páistí sa scoil, a bhfuil ailléirge fíordháiríre acu maidir le cnónna. Tá sé chomh holc sin go bhfuil orthu ‘Anipen’ / ‘epipen’ a bheith acu i gcónaí ar scoil. **Ar mhaithe le sláinte na bpáistí seo táimid ag iarraidh ort gan cnónna nó bia a bhfuil cnónna ann, a thabhairt dod’ pháiste féin ag teacht ar scoil. Is bia cnónna é Nutella mar sin ná seol earraí déanta le Nutella ar scoil.** Tá sé seo riachtanach do shábháilteacht na ndaltaí agus táimid ar fad ag brath ar do thacaíocht.

*We have children in school at present, who suffer from a potentially life-threatening allergic condition (anaphylaxis) re various nuts. This is so severe that they need to have an adrenaline pen (Anipen/ epipen) available at all times. **For the sake of these children’s health, we ask you not to give nuts or any food product that contain nuts, to your child coming to school. This includes Nutella Products – Please Do Not Send Nutella Products or Sandwiches made with Nutella to School.** This is vital and we need your complete co-operation on this matter.*

Tinneas / Timpistí / Leigheas / Illness / Accidents / Medicine:

Má tá do pháiste breoite, ná seol é/í ar scoil.

De ghnáth má éiríonn páiste breoite ar scoil nó má bhíonn timpiste acu, agus go gcaithfidh siad dul abhaile, cuirfear fios ar na tuismitheoirí/caomhnóirí. Tá sé fíor thábhachtach, mar sin go mbeadh uimhreacha teileafóin cuí tugtha don scoil. Is féidir bhur sonraí a fheiscint ar an aip Connect. Má thagann aon athrú ar uimhreacha teileafóin i rith na bliana, ní mór sin a chur in iúl dúinn láithreach tríd an aip nó i r-p chuig an Oifig.

N.B. Má bhriseann nó má ghortaíonn páiste géag nó má bhíonn orthu aon rud cosúil le maidí croise, buataisí, guailleán & rl. a úsáid, ní mór duit glaoch ar an bPríomhoide **sula bhfillfidh** do pháiste ar scoil, ó thaobh sláinte agus sábháilteachta de. Caithfear foirm shlánaíochta a líonadh. Tabharfar é seo duit, nuair a théann tú i dteagmháil leis an bPríomhoide.

If your child is ill, please do not send him/her to school.

If your child becomes ill at school or has an accident, the school would usually contact the parent/guardian. It is essential therefore that we have up to date contact information. You can see the current number on Aladdin by using the Connect app. If there are changes to your details, please change them using the Connect app or email the Oifig.

Should your child injure and need to attend school on crutches, or with a sling or boot etc, you must contact the Príomhoide, prior to your child returning to school. An indemnity form must also be completed. This will be provided when you get in touch.

Is ceart aon fhadhb sláinte atá ag do pháiste a chur in iúl i scríbhinn don scoil nuair a chláraíonn tú do pháiste nó a luaite agus a fhaigheann tú amach faoi. Ní thugtar amach cógas leighis sa scoil. Nasc thíos don pholasaí:
[www.scoilchronain.ie/Polasaí Dáileadh Leighis \(Administration of Medicine Policy\)](http://www.scoilchronain.ie/Polasaí_Dáileadh_Leighis_(Administration_of_Medicine_Policy))

The school must be informed immediately of any health problems, or medical conditions which affect your child. This should be done when registering the child or as soon as one becomes aware thereafter of the medical condition. Medicines are not administered by staff. (Policy is linked above.)

Bualadh Cloiginn / Headbump:

Má bhuailtar cloigeann do pháiste i rith an lae, ba mhaith linn go mbeadh an t-eolas agat. Sa tslí sin is féidir leat súil a choimeád air ó thaobh comhtholgaidh, mar shampla. Má tá sé/sí ábalta filleadh ar a rang agus an lá a chríochnú, beidh téacs/fógra seolta chugat. Bí cinnte go bhfuil an t-eolas seo seolta ar aghaidh chuig feighlí, crèche nó aon duine eile atá ag tabhairt aire do do pháiste.

Má fhaigheann tú an fógra/téacs, beidh do pháiste ina rang agus beidh an Múinteoir Ranga ag coimeád súil orthu. Má bhíonn aon athrú air beidh an scoil i dteagmháil leat.

Is féidir leat teacht chuig an scoil agus athbhreithniú a dhéanamh ar do pháiste – caithfidh tú glaoch ar an Oifig chun é seo a shocrú.

Tá an teimpléad d'fhógra/do théacs thíos.

Go ginearálta, má tá glaoch 'cailte' agat ón scoil agus má úsáidtear glórphost, ar mhiste leat é a sheiceáil ar dtús, sula gcuireann tú glaoch ar an scoil.

If your child has a bump to the head during the school day, but it appears they are able to return to their class and complete their day, the school will send you a standard text. This notification is for information only. You are welcome to call into the school and examine your child. Please call the Oifig to arrange this.

If there are any changes later in the day, you can keep in mind that they experienced a bump to the head. Please ensure that this information is passed on to afterschool care, childminders etc.

If you receive this notice /text, it means that your child has gone back to his/her class and the Múinteoir Ranga is happy to observe them. If there are any changes the school will contact you.

If you have a “missed call” from Scoil Chrónáin, please check voicemail and texts before ringing back.

Fógra Caighdeánach (Standard Notification for a Head Bump):

Ainm Bhuail do pháiste a c(h)loigeann inniu. Your child had a head bump today. Ó Scoil Chrónáin

Duine Fásta Freagrach / Emergency Contact:

Ar Aladdin is féidir leat sonraí do dhuine fásta freagrach gur féidir linn teagmháil a dhéanamh leis sa chás neamhchoitianta nach bhfuil freagra ó tuiste. Féach ar “Emergency Contacts” in Aladdin. De ghnáth is gaol leat iad, m.sh. seantuismitheoir nó cara & rl.

Ná cuir bhur sonraí féin san áit seo, mar tá siad sin ar Aladdin cheana féin. Tá sé i gcomhar na daoine breise amháin.

In the unlikely event that we cannot contact the parent/guardian please supply an emergency contact for us on Aladdin. This is usually a relation, grandparent or friend. Please do not input Father/Mother or Guardian 1/2 here, as they are already inputted. This is for additional contacts only.

Asláithreachtaí / Absences:

Má tá do pháiste as láthair, ní gá glaoch nó r-p a sheoladh chuig an Oifig, seachas má dúirt do dhochtúir é a dhéanamh. Más rud éigin tógalach é, áfach, is féidir dul i dteagmháil leis an oifig - tá tuilleadh eolais anseo

<https://www.hse.ie/eng/services/list/5/publichealth/publichealthdepts/id/>

If your child is absent from school there is no need to ring or email the Oifig. If it is an infectious disease however, and you are advised to do so, please do get in touch. The HSE have more information

here <https://www.hse.ie/eng/services/list/5/publichealth/publichealthdepts/id/>

Nuair atá do pháiste “as láthair” cuireann an Múinteoir Ranga é sin ar an rolla ar Aladdin. Ar an aip Connect, is féidir leat an chúis d’asláithreacht do pháiste a líonadh isteach faoi “attendance”. Sa tslí seo ní bheidh aon ghá duit an tsean “Nóta As Láthair” a sheoladh ar scoil níos mó.

On the Connect app, you can pick the reason your child is absent, go to ‘punc’ and pick the reason from the dropdown menu. This way we eliminate the hard copy “Nóta As Láthair” being sent to school.

Tá sé de dhualgas ar an scoil faoin Acht Oideachais (Leas) 2000, eolas a chur chuig an mBord Náisiúnta Leasa Oideachais nuair a bhíonn páiste 20 lá as láthair ón scoil in aon bhliain amháin. Faoin Acht úd, ní foláir duit an scoil a chur ar an eolas, má tá do pháiste as láthair agus míniú a thabhairt. Tá an treoir thuas.

De ghnáth seoltar fógra chugat ag cur in iúl go bhfuil 15 lá cailte ar scoil ag do pháiste. Ina dhiaidh sin téann tuairisc reachtúil chuig Tusla nuair atá 20 lá cailte ar scoil.

The Education Welfare Act (2000) places a legal obligation on the school to notify the National Education Welfare Board in the event of a child missing more than 20 school days in a school year. Under the new Act you must inform the school about each absence and give the reason. Please see instruction above.

The school would usually notify you when 15 days of absence have been reached. If 20 days are reached, an automatic report is generated for Tusla.

Cuid 2 Acadúil (Section 2 Academics)

An Roinn Oideachas
[Baile - Department of Education and Skills](#)

Department of Education
[Welcome to the Department of Education website -
Department of Education and Skills](#)

An Chomhairle Náisiúnta Curaclaim & Measúnachta
National Council for Curriculum & Assessment (NCCA)
[Bunscoil | NCCA](#) [Primary | NCCA](#)

Obair Bhaile / Homework:

Tugtar obair bhaile do pháistí i rith na seachtaine. Moltar go ndéanfaí obair bhaile in áit chiúin saor ó aon chur isteach agus áit ina bhfuil sé easca aird a choiméad. Tá sé riachtanach go ndéantar an léitheoireacht, táblaí agus litriú, ach go háirithe, leis na páistí sna bunranganna.

Ba chóir go n-oibreodh na páistí go neamhspleách, chomh fada agus is féidir, sna meán agus sna hard ranganna. Ní mór duit an obair bhaile a sheiceáil, áfach, agus an dialann obairbhaile a shíniú gach oíche, nuair atá tú sásta go bhfuil sé déanta go sásúil aige/aici. Má tá cúis éigin ann nach bhfuil an obairbhaile déanta ag do pháiste, ba chóir duit nóta míniúcháin a scríobh chuig an múinteoir ranga.

Pupils receive homework during the week. Homework should be completed in an atmosphere free from distraction. It is essential that parents listen to their child's reading, spellings and tables every night. The time a parent puts into the development of their child's reading skills is essential, especially in the Junior classes, and will reap rewards.

Pupils are encouraged to work as independently as possible on their homework in middle and senior classes. It is important that parents check the homework, however, and sign the child's Journal when the homework is completed to their satisfaction. If a child doesn't complete his/her homework for some reason a note of explanation should be sent to Múinteoir.

An saghas obair bhaile a thugaimid:

Ranganna Naíonán:

Aithint uimhreacha /litreacha /focal
Scríbhneoireacht
Leathanach as leabhar oibre

Léitheoireacht pháirteach

Rang 1 & 2:

Litriú Gaeilge agus Béarla (foghlaim ó bhéal)

Mata: Táblaí (foghlaim ó bhéal)

Suimeanna a scríobh

Léamh Gaeilge agus Béarla.

Tasc Scríbhneoireachta i nGaeilge / i mBéarla.

Reiligiún

Rang 3 - 6:

Litriú Gaeilge agus Béarla (foghlaim ó bhéal)

Léamh Gaeilge agus Béarla

Scríobh Gaeilge nó Scríobh Béarla.

Táblaí

Mata

Stair / Tír-Eolaíocht / Eolaíocht

Am Staidéir/ Taighde

Reiligiúin

Type of Homework usually given:

Naíonáin:

Letter / word / number recognition

Writing

Workbook

Shared Reading

Rang 1 & 2:

Spellings (English and Irish)

Tables

Sums

Reading (English and Irish)

A writing activity

Religious Education

Rang 3-6:

Spellings (Litriú G & B)

Reading (English & Irish)

Writing (English / Irish)

Tables

Maths

History / Geography / Science / Religious Education

Cé mhéid ama? How much time?

Braitheann an méid ama a caitear ar an obair bhaile, dar ndóigh, ar an bpáiste. Seo iad na treoirlínte ginearálta don mhéid ama atá molta againn, do gach rang:

Naíonáin:	10 – 15 nóiméad.
Rang 1 & 2:	20 – 30 nóiméad.
Rang 3 & 4:	30 – 40 nóiméad.
Rang 5 & 6:	40 – 60 nóiméad.

Má bhíonn fadhb ag an bpáiste, ar bhonn rialta, ba chóir duit dul i dteagmháil leis an múinteoir ranga faoi.

The amount of time spent on homework depends, of course, on the child. These are general guidelines as to the amount of time we would recommend for each class:

Should a child have difficulty with his/her homework on a regular basis an appointment should be made to discuss the matter with Múinteoir.

Scrúduithe Caighdeánacha / Standardised Tests:

De ghnáth i Téarma 3, déanaimid scrúduithe caighdeánaithe i Scoil Chrónáin m.sh. Scrúduithe Dhroim Chonrach Gaeilge, Béarla agus Mata. Tugaimid na torthaí i bhfoirm sTen mar chuid do thuairisc deireadh na bliana.

Míniú ar sTen / Understanding STen scores:

Téann scór STen ó 1 go 10. Sa tábla thíos feictear an rud a insíonn na scóir difriúla STen mar gheall ar dhul chun cinn do pháiste sa léitheoireacht Bhéarla, sa mhatamaitic agus sa léitheoireacht Ghaeilge.

Scór STen	Míniú an Scóir	Cionroinnt a fhaigheann an scór seo
8 -10	I bhfad thar an meán	1/6
7	Meánach Ard	1/6
5 - 6	Meánach	1/3
4	Meánach Íseal	1/6

Déantar iad ionas gur féidir linn eolas cruinn a bhailiú, a rachaidh chun tairbhe Pleanála Uile na Scoile de, sna hábhair áirithe seo. Is bealach amháin iad na scrúduithe seo chun measúnú a dhéanamh ar na páistí. Úsáideann múinteoirí módhanna and straitéisí eile chun dul chun cinn na bpáistí a mheas chomh maith. Bigí deimhneach de, go gcuireann sibh bhur bpáistí ar a suaimhneas faoi na scrúduithe caidhdeánacha. Ní bheifí ag súil go mbeidís ábalta gach uile ceist a fhreagairt. Níl gá dóibh ach a ndícheall a dhéanamh ar an lá.

Standardised tests e.g. Drumcondra English, Irish and Maths are administered in the school. Results are given as sTen scores as part of the School Year Report.

STen scores go from 1 to 10. The table below describes what the different STen scores tell you about your child's achievement in English reading, Maths and Irish reading.

<i>STen Score</i>	<i>Meaning of Score</i>	<i>Proportion who get this score</i>
<i>8 - 10</i>	<i>Very High</i>	<i>1/6</i>
<i>7</i>	<i>High Average</i>	<i>1/6</i>
<i>5 - 6</i>	<i>Average</i>	<i>1/3</i>
<i>4</i>	<i>Low Average</i>	<i>1/6</i>
<i>1 - 3</i>	<i>Very Low</i>	<i>1/6</i>

We gather important data from the tests which will inform our wholeschool planning. They are just one way in which learning is assessed. The múinteoirí use a range of other methods and strategies to assess a child's progress. There is nothing for your child to worry about with these tests. You can reassure your child that they are not expected to know everything on the day. All they are asked to do is to give it their best effort.

Tuairiscí Scoile / End of Year School Reports:

De ghnáth cuirtear na tuairiscí scoile ar fáil i dTearma 3. Bíonn siad ar fáil ar Aladdin agus an aip Connect. Bí cinnte go bhfuil tú ábalta an aip Connect a úsáid. Má tá tú ag iarraidh tuairisc a íoslódáil, lean na treoracha thíos.

Usually the reports are made available in Term 3 and all can be seen on Aladdin or the Connect app.

Please be sure that you are registered and able to open the Connect app. If you wish to do so, you can access Aladdin through your laptop/ computer.

*Go to www.aladdin.ie and choose **Sign in -> Parent sign in**, login using their registered email and password. Reports can be downloaded and/or printed.*

**Nasc d'Abairtí Samplacha ó na Tuairiscí Scoile /
Link to Sample comments from End of Year School Reports
[Tuairisc Scoile | Scoil Chrónáin \(scoilchronain.ie\)](http://www.scoilchronain.ie)**

Cianfhoghlaim / Remote Learning:

Mar réamhchúram i rith na paindéime, chuireamar na leabhair scoile abhaile ó am go ham ar eagla dúnadh na scoile.

As a precaution, during the pandemic we sent home books in advance of holiday breaks, to prepare for possible school closures.

Please see our school's remote learning policy:

[Polasaithe | Scoil Chrónáin \(scoilchronain.ie\)](http://www.scoilchronain.ie)

Cuid 3 Naíonáin Bheaga ag Tosú ar Scoil (Section 3 Junior Infants Starting School)

Is céim mhór chun cinn i bhforbairt an linbh é tosú ar scoil. Le cabhair agus tacaíocht ón mbaile agus ón scoil, áfach, ba chóir dó/di socrú síos gan mórán duan ná deacracht. Tá ról rí-thábhachtach ag tuismitheoirí agus caomhnóirí chun cabhrú leis an bpáiste bheith neamhspléach agus muiníneach.

Starting school is an important step in your child's development. Children will usually adapt quickly and easily to their new surroundings and will settle down without difficulty with your support. Parents / guardians can help to prepare the child to cope with separation / socialisation and help to build a sense of independence and confidence in him / her.

Conas cabhrú le do pháiste a bheith ullamh don scoil / How to help your child prepare for school:

Go Ginearálta / In General:

Spreag do pháiste chun:

- É / í féin a ghléasadh
- An leithreas a úsáid i gceart.
- A lámha a ní agus a thriomú.
- Ciarsúr a úsáid.
- Cóta a chur orthu, a bhaint díobh agus a chrochadh suas iad féin.
- An mála scoile / bosca lóin a oscailt agus a dhúnadh agus rudaí a chur isteach agus a thógáil amach as.
- Bréagáin a roinnt agus imirt le páistí eile. Iad a phiocadh suas agus a chur ar ais san áit cheart, nuair atá siad críochnaithe leo.
- A bheith chomh neamhspléach agus is féidir - ná déan aon ní dóibh gur féidir leo a dhéanamh dóibh féin.

Encourage your child to:

- *Dress and undress himself / herself.*
- *Use the toilet properly.*
- *Wash and dry hands.*
- *Use a handkerchief / tissue.*
- *Put on, take off his / her coat and hang it up.*
- *Practice putting items in schoolbag / lunch box, taking items out, opening and closing the schoolbag / the lunchbox*
- *Share toys and take turns in play. Tidy up toys / books etc. after use.*
- *To be as independent as possible. Never do anything for your children that they can do perfectly well for themselves.*

Go hAcadúil / *Academic*:

- Léigh don leanbh go minic. Lig dó/di bheith páirteach sa phróiséas. Mar shampla: An leabhar a oscailt, labhairt faoin bpictiúr, leathanaigh a chasadh etc.
- Bíodh ainm, seoladh agus uimhir ghutháin do linbh ar eolas aige / aici.
- Labhair an oiread Gaeilge agus is féidir leat le do pháiste
- Labhair faoi eachtraí an lae.
- Usáid focail agus téarmaí ar nós: bainne / tae / dinnéar / oráiste/ brioscaí /milseáin. Dia dhuit / Slán / Le do thoil / Go raibh maith agat.
- Spreag é / í chun dathú / péinteáil agus rl.
- Labhair go dearfach faoin scoil agus faoin bhfoireann le do pháiste. Ná déan gearán faoi cheachtar acu os comhair do pháiste.
- Bí ag aithint uimhreacha, dathanna / cruthanna.
- Abair rainn / amhráin dóibh. Cuir míreanna mearaí le chéile.
- Spreag iad chun gluaiseachtaí suas agus síos agus “Tuathalacha” a dhéanamh le criáin agus pinn luaidhe.
- Imir cluichí le huimhreacha. / Cé mhéad milseán? / Cé mhéad briosca?

- *Read to your child. Let them be involved, hold book, turn pages, discuss pictures.*
- *Ensure your child knows his / her full name, address and telephone number.*
- *Use as much Irish as possible in your daily routine.*
- *Discuss everyday happenings.*
- *Introduce Irish words as much as possible: bainne / tae / dinnéar / oráiste /brioscaí / milseáin. Dia dhuit / Slán / Go raibh maith agat*
- *Encourage your child to paint, colour, draw etc.*
- *Speak positively about school and staff and don't criticise either in children's presence.*
- *Choose games which encourage counting, recognition of colours / shapes etc.*
- *Recite nursery rhymes, sing songs, complete jigsaws etc.*
- *Encourage your child to scribble from top to bottom /in an anti-clockwise direction etc.*
- *Play number games. How many sweets? Biscuits? Etc.*

Eile / *Other*:

- Ná roghnaigh éadaí, boscaí lóin, málaí scoile, bróga atá deacair le láimhseáil.
- Bíodh an mála scoile mór agus téagartha.
- Cuir buidéal deochanna / flaisc i mála plaisteach.

- Déan deimhin de go bhfuil na sonraí ceart ag an scoil i gcónaí. Úsáid an aip ‘Connect’ chun aon athrú a dhéanamh.
- Scríobh ainm as Gaeilge/ Cuir lipéad ar éadaí do linbh (cóta, geansaí, bosca lóin, maircéirí, ach go háirithe).
- *Avoid clothes / shoes / schoolbags / lunch-boxes, flasks etc. that are difficult to manage.*
- *Ensure that the schoolbag is large and strong enough (at least 30cm or 45cm) to take books and lunch boxes comfortably.*
- *Put drinks / flasks in plastic bag in case of leakage.*
- *Ensure that all contact details are kept up-to-date by updating the Aladdin ‘Connect’ app.*
- *Label / Write name “As Gaeilge” on children’s clothes and belongings (especially coats, jumpers, lunch box, markers).*

An Chéad Lá Ar Scoil /The First Day at School:

Bí dearfach le do pháiste ó thaobh chúrsaí scoile de. Mínígh don pháiste go mbeidh an múinteoir ag tabhairt aire dó, go mbeidh cairde nua aige / aici, agus go mbainfidh sé / sí taitneamh as saol na scoile.

Be **positive** with your child when preparing him / her for school and explain what will happen there re: Múinteoir, other children, breaks, sitting down, tidy-up time and home time.

The following dates and times apply for children commencing Naíonáin Bheaga in September 2022:

22/08/2022	Cuairt na Naíonán Beag Naíonáin Bheaga visit the school - in small groups – appointments will be issued
25/08/2022	Athoscailt na Scoile School Re-opens
25/08/2022 – 09/09/2022	9.10am - 12.00pm
12/09/2022 ar aghaidh (onwards)	9.00am - 13.40pm
Corpoideachas (P.E.) Commencing week of 12/09/2022	Dé Máirt agus Déardaoin Tuesday and Thursday

Tabharfaidh an múinteoir an rang amach ina líne go dtí áit ar leith sa chlós ar a 12.00. Tá sé tábhachtach go mbeiféa sa chlós in am. Iarrfaidh sí ar

thuismitheoir/ feighlí an chéad pháiste teacht agus an páiste a bhailiú. Ansin iarrfaidh sí ar thuismitheoir / feighlí an dara páiste teacht agus an páiste a bhailiú etc. **De bharr cúiseanna sláinte agus sábháilteachta níl cead an páiste a thógáil ón line, sula n-iarrann an múinteoir ort sin a dhéanamh.** Mínígh an próisneas seo, le do thoil, d'aon duine a bheidh ag bailiú do pháiste.

Más rud é go gcuirtear moill ort aon lá, de bharr **toscaí eisceachtúla**, glaogh ar an Oifig 01-4588889 chun an scoil a chur ar an eolas.

Tabharfar foirm duit le líonadh isteach an chéad tseachtain ar ais ag liostáil ainmneacha na ndaoine gur féidir leo do pháiste a bhailiú agus uimhreacha a bhfón póca. Tabhair an fhoirm chomhlánaithe ar ais don **mhúinteoir ranga** san Fhillteán Obair Bhaile comh luath agus is féidir. Má bhíonn aon athrú ann maidir le bailiúchán do pháiste, ba cheart duit é sin a rá leis an múinteoir agus leis an bpáiste roimh ré trí nóta a chur san Fhillteán Obair Bhaile (nó Class Dojo). Ba chóir d'aon duine nua ar an liosta é / í féin a chur in aithne don mhúinteoir nuair a thagann sé / sí chuici chun an páiste a bhailiú.

Tá an fhoirm seo do Naíonáin amháin. Ó Rang 1 suas ba cheart go mbeadh a fhios ag do pháiste cé atá á bhailiú.

*On the first day, you will collect your child at 12:00. Múinteoir will bring the children in their line to the allotted area of the yard at **12 noon. It is essential that you are in the yard on time.***

*Múinteoir will ask the parent / minder of the first child in the line to come forward and collect that child. Then they'll ask the parent / minder of the second child to come forward etc. **For health and safety reasons you may not take the child from the line before the Múinteoir asks you to come forward. Please explain this process to all your childminders.***

*If you are ever running late, due to **exceptional unforeseen circumstances**, please ring the Oifig 01-4588889 to inform the school.*

*During the first week you will be given a form to fill in regarding **names and telephone numbers** of the people who may collect your child from Naíonáin Bheaga & Mhóra only. The completed form is to be returned to the **Múinteoir Ranga** that week.*

If at any time the collecting routine has to be changed, be sure and tell Múinteoir and your child beforehand by writing a note Class Dojo or informing the Office at oifig@scoilchronain.ie. Any new person on your list should identify himself /

herself to Múinteoir when he / she comes forward to collect your child. We cannot release a child to an unauthorised adult.

The form is for Naíonáin only. From Rang 1 onwards, your child is expected to know who is collecting them.

Obair Bhaile / Homework¹:

Tugtar obair bhaile do na daltaí ón Luan go dtí an Déardaoin. Tá ról lárnach agat chun cabhrú le do pháiste i bhforbairt na litearthachta agus na h-uimhreachta.

Homework is given from Monday to Thursday. You have a vital role to play in helping your child develop his/her literacy and numeracy skills.

Litreacha / Letters:

Nuair a thosaíonn na páistí ag foghlaim litreacha, seo an próiseas a leanaimid. Ba chóir do na páistí

- Fuaim na litreach a rá
- Ainm na litreach a rá
- An litir a scríobh
- Focail a thosnaíonn leis an litir a rá
- Focal aonair a léamh
- Focal a aithint agus é a chur in abairt.

To help the child identify letters the child should be enabled to

- *Say the sound of the letter*
- *To name the letter*
- *To write the letter*
- *Name words that start with the letter*
- *To read individual words*
- *To identify a word and put the word into a sentence.*

Scríbhneoireacht /Writing:

Tá sé an-tábhachtach go bhfuil an páiste ag breith ar an bpeann luaidhe mar is cóir. Léigh na treoracha thíos go cúramach.

Conas breith ar do pheann luaidhe



¹ Féach ar Cuid a Dó (See Part Two also)

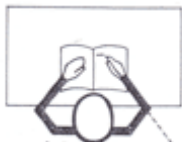
Ba chóir é a mhúineadh do pháiste go luath conas breith i gceart ar pheann luaidhe. Cruthaítear drochnósanna go luath agus is deacair iad a bhriseadh. Tóg an t-am chun féachaint ar na pictiúir thíos agus cuir in iúl dod' pháiste gurb é seo an t-aon slí chun breith ar an bpeann luaidhe. Má tá an ghreim cheart acu beidh an scríbhneoireacht níos néata agus beidh sé níos éasca bogadh ar aghaidh go dtí scríbhneoireacht cheangailte. Ba chóir do thosaitheoirí scríobh le peann luaidhe triantánach. Tá sé éasca teacht orthu seo i siopaí leabhar.



Beir greim éadrom ar do pheann luaidhe le d'ordóg agus do chéad mhéar. Ba chóir don mhéar sa lár bheith ar an bpeann luaidhe go héadrom freisin. Beidh na méara eile ag luí go héadrom ar an mbord.

Ba chóir don pheann luaidhe bheith ag dul sa treo céanna le do lámh. Ná cuir é san aer ná i dtreo do choirp. Bain úsáid as do lámh eile chun greim a choimeád ar do chóipleabhar. Féach thíos.

Ná brúigh go trom ar an bpáipéar.



How to hold your pencil



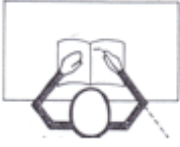
*Children must be taught from a very early age to hold a pencil correctly. Bad habits formed early are very hard to break. Please take the time to look at the pictures below and **insist** that this is the only way to hold a pencil. A correct grip makes for neater writers and the transition from print to joined writing later on in school is more successful. Early writers should write with triangular pencils. These are readily available in all stationary shops.*



Hold your pencil very lightly with your thumb and forefinger. Your middle finger should also rest very lightly on the pencil. Your other fingers and hand can rest lightly on the desk.

Do **not** press heavily on the paper.

The pencil should point along your arm. It must not point up in the air or towards your body. Use your other hand to hold your paper or exercise book steady (see below).



Is féidir leat cabhrú ... *You can help*

Tá sé tábhachtach go mbeidh do pháiste in ann an tsúil agus an lámh a chur ag obair ag an am céanna. Ba chóir go mbedh sé / sí ag súgradh le breágain ar nós:

- Míreanna mearaí, cnaipí agus snáithín
- Márla chun a c(h)ruthanna féin a dhéanamh
- Leabhar dathúcháin agus criáin thiubha
- Bileoga páipéir le gearradh le siosúr beag etc

Your child must develop the ability to get the hand and eye working together. This is very important. Get her / him manipulating toys like:

- *Jig-saws, lego, beads to thread*
- *Plasticine (marla) to make her / his own shapes*
- *A colouring book and thick crayons*
- *Sheets of paper that she / he can cut up with a safe scissors etc*

Foghraíocht / Phonics:

Tosnaíonn sé/sí Béarla i Naíonáin Mhóra. Beidh obair seolta abhaile. Léigh an t-eolas seo go cúramach.

*English Reading and English phonics will be introduced in **Naíonáin Mhóra**. Work sheets will be sent home to be completed. Please read the following information carefully.*

Learning the letter sounds

As the letters are taught, they are stuck into a Sound Book, which is brought home. Please go through the Sound Book with your child every day.

*The letters are not introduced in alphabetical order. The first group ‘**s a t i p n**’ has been chosen because they make more simple three letter words than any other six letters. Sounds with more than one way of being written are first taught in one form only. For instance, the sound ‘**ai**’ (rain) is on the Sound Sheet. The alternatives ‘**a_e** (cake) and ‘**ay**’ (day) will be taught later.*

Letter Formation

It is very important that your child holds the pencil correctly. If the hold starts incorrectly it is very difficult to get it right later on. It is important to ensure your child is making the letter in the correct manner. Many of the letters have a joining tail at the end to make it easier to transfer into joined up writing.

Blending

*Blending is a process of saying the sounds in a word and then running them together to make the word, e.g. c – a – t is cat. It is a technique your child will need to learn, and it improves with practice. Some children take longer to do this than others. To start with, you should sound out the word and see if your child can hear it. The sounds must be said quickly to hear the words. It is easier if the first sound is said slightly louder e.g. **b**-u-s. To give your child practice at blending she / he will bring home Word Boxes. Please listen to your child blending the sounds to read the words, and then send it back to school. Once your child has been through the Word Boxes they will bring home a reading book. Please listen to him / her regularly.*

It is important that your child understands what she / he has read. You can help by talking about the story with your child.

Identifying sounds in words:

If your child is going to be able to write independently she / he will need to be able to hear the sounds in words and to write the letters for those sounds. When your child is able to hear the sounds in word he / she may bring home words with which to practice their new writing skill. These words are for you to call out. He / she has to listen for the sounds and write down the letters for these sounds. This is the first step towards your child becoming an independent writer.

Tricky Words:

Some words cannot be sounded out or spelt correctly by listening for the sounds in them. These are called 'Tricky Words' and have to be learnt. As your child becomes more fluent at reading and writing, she / he will be taught how to cope with Tricky Words.

Finally:

This all sounds like a great deal of work, but it goes in stages and is spread over a considerable period of time. Little and often is best. Your child may be tired after school but don't worry. It is better to leave it than to push too hard. There is no doubt that the effort on your part, at this stage, is well worth it.

Mata/ Maths:

Ag comhaireamh 1 go dtí 5 (Naíonáin Bheaga)

Dathanna, cruthanna, airgead, meaitséail, sortáil.

Is féidir samplaí ón timpeallacht a úsáid chun cleachtadh a dhéanamh.

Counting 1 to 5

Colours, shapes, money, opposites, matching and sorting. Anything from the child's environment may be used as practice.

Patrún a dhéanamh

Ábhair choincréideach a úsáid chun patrúin a dhéanamh.

Pattern Making

Concrete materials should be used to practice pattern making.

Cuid 4 Tíos (Section 4 Housekeeping)

“Le Chéile”

Is é “Le Chéile” Cumann na dTuismitheoirí i Scoil Chrónáin. Tá siad mar bhall don NPC. Mar thuismitheoir le páiste atá ag freastal ar an scoil seo, tá tú mar bhall de ‘Le Chéile’. Beidh eolas seolta amach ó am go ham ag lorg do chabhair.

Le Chéile is the Parents’ Association in Scoil Chrónáin. They are a member of the National Parents Council (NPC). As a parent/guardian of a child in the school you are automatically a member of Le Chéile. Information will be sent out regarding fund raisers or needing volunteers.

Conas íoc? How to pay?

€ EFT IBAN IE82 BOFI 9012 9892 9135 94
Bank of Ireland, Rathcoole

€ Seic / Cheque / Postal Order: made out to Le Chéile

€ Airgead Tirim / Cash: to the Committee

€ Revolut: Sorcha McCabe 086 2329316

[Role of a Parents' Association | National Parents Council \(npc.ie\)](https://www.npc.ie/)

Rialacha na Scoile /School Rules:

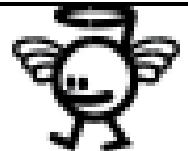
  	Labhair Gaeilge i gcónaí
	Bíodh meas agat ar dhaoine eile & ar a maoin
	Bí fírinneach agus macánta 
	Éist go cúramach leis na múinteoirí 
	Siúil i gcónaí agus tú istigh sa scoil 
	Déan do dhícheall 
	Bí deas cineálta le daoine eile 



Speak Irish at all times



Respect others and their property



Be honest and truthful



Listen carefully to your teachers



Always walk when inside the school



Do your best



Be kind and gentle to others



Cód Iompair / Code of Behaviour:

Chomh maith leis na rialacha, caithfidh na daltaí i Scoil Chrónáin cloí leis an gCód Iompair (ar fáil ar an suíomh idirlín).

<https://www.scoilchronain.ie/polasaithe>

As well as the rules, the pupils are expected to adhere to the Code of Behaviour available in the policy section of the website (link above).

Éide Scoile / School Uniform:

www.scoilchronain.ie/Polasáí_Éide_Scoile/Uniform_Policy

Geansaí dubhghorm le 'v' / Navy v-neck jumper

Léine bhán / White polo shirt

Cailíní: Filleadh Beag / Kilt nó is féidir bríste dubhghorm a chaitheamh chomh maith, navy trousers may be worn.

Bróga Dorcha / Dark Shoes (preferably with velcro/fastner)



Culaith Spóirt na Scoile / School Tracksuit:

B'fhearr bróga reatha le boinn bhána, más féidir.

If possible, white soled runners are preferable.

Ba mhaith linn go gcinnteodh gach tuismitheoir go bhfuil an t-éide scoile iomlán ar gach páiste gach lá.

Stockists

For school kilt and tracksuit - O'Neill's, Long Mile Road & www.ofarrellschoolwear.com

*Extra Kilt Pins from Hickeys / Home Focus / other similar stores
Regular department stores for navy jumper, trousers and white top.*

Ba cheart do na páistí bróga reatha agus culaith reatha na scoile a chaitheamh an lá a mbíonn snámh (R1-4 Dé Luain) nó Corpoideachas acu. Gheobhaidh sibh amach cén laethanta iad sin nuair a fhilleann na páistí ag tús na scoilbhliana.

Ní chéadaítear seoda a chaitheamh sa rang Corpoideachais (seachas fáinní cluasa studa).

Children should wear suitable runners and clothing when going swimming (R1-4 Monday) or when going to Physical Education (PE) classes. You will be notified of the days your child will have PE at the beginning of each new school year. The school uniform is to be worn on all other occasions.

Children are not allowed to wear jewellery during P.E. class (except stud earrings).

An Bhliain Scoile / The Academic Year:

Tá an tréimhse ar scoil roinnte i dtrí Théarma, de ghnáth Téarma 1 ó thús na bliana go dtí an Nollaig, Téarma 2 ó Mhí Eanáir go dtí Saoire na Cásca agus Téarma 3 tar éis na Cásca go dtí Saoire an tSamhraidh.

Bíonn leath lá ag deireadh gach téarma.

Go bliantúil déantar uasdátú ar an bhféilire agus beidh sé ar fáil ar an suíomh idirlín. [Féilire | Scoil Chrónáin \(scoilchronain.ie\)](http://Féilire | Scoil Chrónáin (scoilchronain.ie))

The school year is divided into three Terms, usually Term 1 is from the reopening date to the Christmas holidays in December, Term 2 from January to the Easter holidays and Term 3 from after the Easter holidays to the Summer holidays.

There is a half day at the end of each Term.

Annually the school calendar is updated and will be available on the website (see link above).

Coinne le Múinteoir / Appointment le Múinteoir:

Aithnímid an tábhacht a bhaineann le co-oibriú idir an baile agus an scoil chun an tairbhe is mó a bhaint as am scoile. Más mian le tuismitheoirí / caomhnóirí aon rud a phlé leis an múinteoir ranga faoina bpáiste is féidir coinne a d'oirfeadh dóibh araon a dhéanamh. Is féidir coinne a dhéanamh trí:

- nóta a chur sa dialann obair bhaile
- r-phost a sheoladh chuig rp scoile an mhúinteora ranga
- r-p a sheoladh chuig oifig@scoilchronain.ie nó
- ghlaoch ar an Oifig (01) 4588889, má tá sé práinneach.

De ghnáth bíonn cruinnithe múinteoirí / tuismitheoirí againn i dTéarma 1 agus bíonn siad eagraithe ar an aip 'Connect'. Beidh fógra seolta.

We believe that co-operation between home and school is essential if your child is to get maximum benefit from his/her time in school. If you have a matter you wish to discuss with Múinteoir you should make an appointment to see him/her by:

- *writing a note in the Homework journal;*
- *sending an email to the Múinteoir at his/her school email;*
- *sending an email to oifig@scoilchronain.ie or*
- *ringing the Oifig @ 01-4588889, if it is urgent.*

Usually Parent / Teacher meetings take place in Term 1 and appointments are arranged on the Connect app. A notice will be sent.

Bréagáin & Milseáin / Toys & Treats:

Táimid ag iarraidh oraibh gan aon bhréagán a sheoladh ar scoil le bhur bpáistí. Ba mhaith linn laghdú a dhéanamh ar dheiseanna trastruailiú ar fud na scoile. Clúdaíonn sé seo gach saghas breagán, ach go speisialta na "Pop-its" a bhíonn páistí ag láimhseáil lena chéile. Ná seol isteach milseáin nó cáca do laethanta breithe ach an oiread.

We are asking all parents not to send any toys to school with their children. This includes "Pop-Its" that children are continuously sharing with each other. As you are aware the school is trying to minimize the opportunities for cross-contamination. Please do not send in treats and cakes for birthdays.

Cuireadh Breithlae / Birthday Invitations:

Níl cead cuireadh breithlae a thabhairt amach i rith am scoile, mar cuireann seo isteach ar pháistí nach bhfaigheann cuireadh.

Birthday invitations are not to be handed out during school, as this can upset children who do not receive an invitation.

Madraí (Dogs):

Níl cead madraí a thabhairt isteach sa scoil, sa chlós & rl.

No dogs are permitted on school grounds and please keep them away from the front gate entrance in the mornings and at collection time.

Proiséas Chun Gearán a Dhéanamh / Complaints Procedure:

Má bhraitheann tuismitheoirí go bhfuil aon chúis gearáin acu ní mór coinne a dhéanamh agus é a phlé leis an múinteoir ranga ar dtús, in dhiaidh sin muna bhfuil réiteach faighte leis an Príomhoide. Muna bhfaightear réiteach ansin is féidir dul i dteagmháil leis an gCathaoirleach den mBord Bainistíochta.

Any complaint must first be addressed to the class teacher. If the problem is unresolved you may make an appointment to discuss the matter with the Príomhoide. If that fails to resolve the issue you may contact the Chairperson of the Board of Management.

Fón Póca & Gléas Leictreonach / Mobile Phones & Other Electronic Devices:

Tá cosc iomlán ar fhóin cheamraí a úsáid sa scoil ag imeachtaí scoile, mar cuireann siad isteach ar phríobháideacht an duine. Tá an polasaí faoi seo sa Chód Iompar ([https://www.scoilchronain.ie/Cód Iompair](https://www.scoilchronain.ie/Cód_Iompair) Code of Behaviour).

Camera phones are seen as an invasion of privacy and may not be used in school or during any school activities. See link above to Code of Behaviour policy.

Maor Tráchtá / Traffic Warden:

Meabhraigh do do pháiste, le do thoil, an tsráid a thrasnú leis an Maor Tráchtá (Emer).

Please remind your child/children, of the importance of crossing the street with the Traffic Warden (Emer) before and after school.

Cuntais Iníochta / Accounts Payable:

Úsáideann Scoil Chrónáin epayments ar Aladdin agus an aip Connect chun airgead a bhailiú. Tá tuilleadh eolais ag an nasc seo. [2018 Aladdin epayments](#)

Má tá ganntanas airgid ag teaghlach ba chóir dóibh dul i dteagmháil leis an bPríomhoide agus déanfar socrúithe cuí dóibh.

Scoil Chrónáin uses Aladdin epayments (see link above) to collect money electronically, usually through the Connect app.



If a family is experiencing financial difficulties and finds it difficult to pay, then they should discuss the matter with the Príomhoide. An appointment can be made through oifig@scoilchronain.ie

Árachas / Insurance:

Ceannaíonn an scoil árachas pearsanta 24 u.a.c. do na daltaí agus cuirtear ar bille scoile an dalta é. Íosmhéid gur féidir a íoc ar an gcóras ná €6.40. Tuilleadh eolais sa nasc thíos.

The schools purchases an annual “Pupil Personal Accident Insurance” policy and this is put on the pupil’s school bill. The minimum payment on the system is €6.40. More information at this link:

<https://www.allianz.ie/pupil-personal-accident/>

Ról na dTuismitheoirí/ Caomhnóirí / Parents' / Guardians' Role:

Tá tábhacht as cuimse ag baint le ról na dtuismitheoirí / caomhnóirí chun cabhrú le hobair na scoile. Caithfidh sibh dearcadh dearfach i leith na Gaeilge a chothú sna páistí agus tacaíocht a thabhairt d'obair na scoile agus d'obair an ranga. Is mór an chabhair í don pháiste má úsáidtear focail Ghaeilge ag ócáidí áirithe sa bhaile. Tá sé an-tábhachtach go léiríonn sibh don pháiste go bhfuil dearcadh dearfach agaibh i leith na Gaeilge. Is féidir na gnéithe seo a leanas a chur san áireamh:

Ba chóir do thuismitheoirí an Ghaeilge atá acu a úsáid go rialta gach lá sa bhaile ag am bricfeasta, ag am dinnéir nó ag am dul a luí.

Is féidir taifead de scéalta agus d'amhráin a cheannach agus éisteacht leo in éineacht leis na páistí.

D'fhéadfaí DVD a cheannach agus féachaint orthu leis na páistí.

- Ba chóir na páistí a spreagadh chun féachaint ar chartúin / chlár ar TG4.
- Ba chóir do thuismitheoirí an Ghaeilge atá acu a úsáid má bhíonn siad ag labhairt le múinteoirí, leis an bpríomhoide nó le foireann na scoile.
- Ba chóir do thuismitheoirí leabhair Ghaeilge a léamh dá bpáistí.

Parents / guardians play a very important role in supporting the work done in school. You must foster a positive attitude towards the Irish language and support school and class work. It is a great help to children if Irish words are used at home occasionally, this shows the children that their parents have a positive attitude towards Irish and are proud to speak it. The Irish language can be incorporated into daily life through the following means:

- *Make regular use of Irish at home; e.g. at mealtimes / bedtime.*
- *Recordings of Irish stories and songs are widely available to purchase.*
- *DVDs in Irish are also available and are enjoyable to watch together.*
- *Children should be encouraged to watch cartoons / Irish programmes on TG4.*
- *Use your own Irish when speaking to members of school staff.*
- *Irish books could be read as an alternative to English books.*

Athruithe sa Bhaile / Changes at Home:

Cuir in iúl dúinn má bhíonn aon athruithe sa saol ag an mbaile ar nós bás clainne, bás peata, bogadh tí nó tuistí ag scaradh. Bheadh sé tábhachtach go mbeadh eolas mar sin againn d'fhonn faire amach don pháiste.

Please make us aware of any changes such as a bereavement in the family or a beloved pet, moving house or parent/guardian separating. This information would be important for us to know (we will be non-judgemental) so that we can look out for the child.

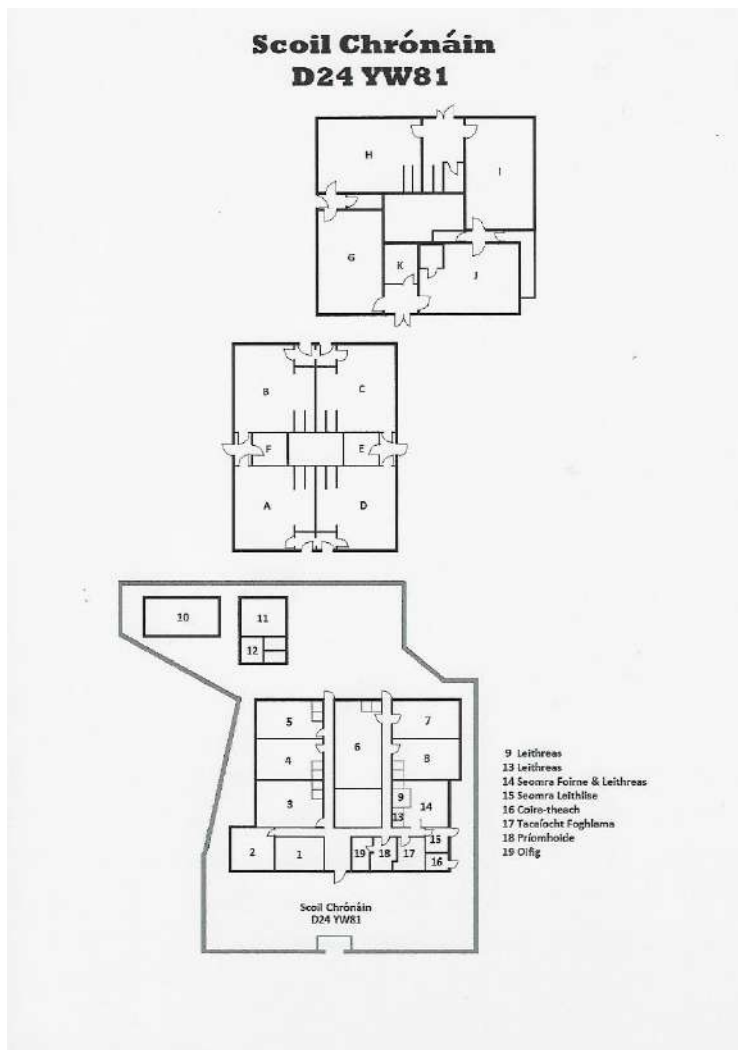
Is féidir leat sonraí pearsanta a athrú ar Aladdin. *You can make changes to your personal information on Aladdin.*

Teicneolaíocht an Eolais agus na Cumarsáide (TEC) / Information and Communication Technology (ICT):

Faigheann daltaí na scoile deiseanna iontacha chun úsáid a bhaint as an teicneolaíocht chun curaclam na bunscoile a chomhlánú. Tá clár bán idirghníomhach i ngach seomra ranga i Scoil Chrónáin. Spreagadh iontach is ea iad seo do dhaltaí agus do mhúinteoirí sna hábhair ar fad. Úsáideann na daltaí ríomhairí chun daingniú a dhéanamh ar obair an ranga, chun taighde a dhéanamh do thionscnaimh agus chun obair scríofa a chur i láthair. Tá [Polasaí Usáide Inghlactha](#) ag an scoil maidir le TEC.

The pupils of Scoil Chrónáin are in the enviable position of having the latest technology at their fingertips. Each classroom has an interactive whiteboard (IWB). The IWB is a wonderful tool to inspire both students and teachers in all the curricular areas. The children get an opportunity to use computers to consolidate class work, to research topics for project work and to present their written work in an attractive way. The school has an [Acceptable Usage Policy](#) as regards ICT.

Fearann Scoil Chrónáin / School Grounds:



De ghnáth tá na bun ranganna i Seomra 1-11 agus na hard ranganna ins na Seomraí sa Pháirc, A-I.

Úsáideann an scoil Ionad Pobail Ráth Cúil, go háirithe an halla mór i gcomhair Corpoideachais.

Usually the younger children are in Rooms 1-11 and the older children in Rooms A-I in “An Pháirc”.

We also use Rathcoole Community Centre, for PE, assemblies etc.

POD (Primary Online Database):

Coimeádtar *sonraí pearsanta neamh-íogaire páistí, a chláraítear i mbunscoil, ar “Bhunachar Sonraí Ar Líne do Bhunscoileanna na Roinne Oideachais agus Scileanna” (POD). Tá *ar na ceisteanna neamh-íogaire do POD marcáilte thíos.

Meastar, áfach, gur catagóirí sonraí íogaire iad ‘reiligiún’ agus ‘cúlra eitneach agus cultúrtha,’ faoin reachtaíocht um Chosaint Sonraí. Dá bhrí sin, tá an dá cheist sin den fhoirm rognach agus tá sé riachtanach cead an tuismitheora/chaomhnóra a fháil chun an t-eolas faoin dhá ábhar sin a aistriú chuig an Roinn Oideachais agus Scileanna. (Féach lch 4 ** don Fhoirm Rollúcháin) Ní chuirfear sonraí ar aghaidh chuig POD, ach do na daltaí a chlárófar sa scoil. Coimeádfar an Fhoirm Rollúcháin sa scoil agus usáidfear eolas neamh-íogair ann ar **Aladdin**, bunachar sonraí na scoile, le haghaidh dea-eagar na scoile.**

All children enrolled in a primary school will have their non-sensitive data stored on the “Department of Education and Skills Primary Online Database” (POD). However, both ‘religion’ and ‘ethnic and cultural background’ are regarded as ****sensitive personal data categories, under Data Protection legislation, and therefore these questions are optional. Permission is required to forward these two optional pieces of information to the Department of Education and Skills. (See page 4** of the Enrolment Form)** Information will only be uploaded to POD if your child is enrolled. The Enrolment Form will be retained by the school and some of the non-sensitive data will be used on the school’s database **Aladdin** for administration purposes.*